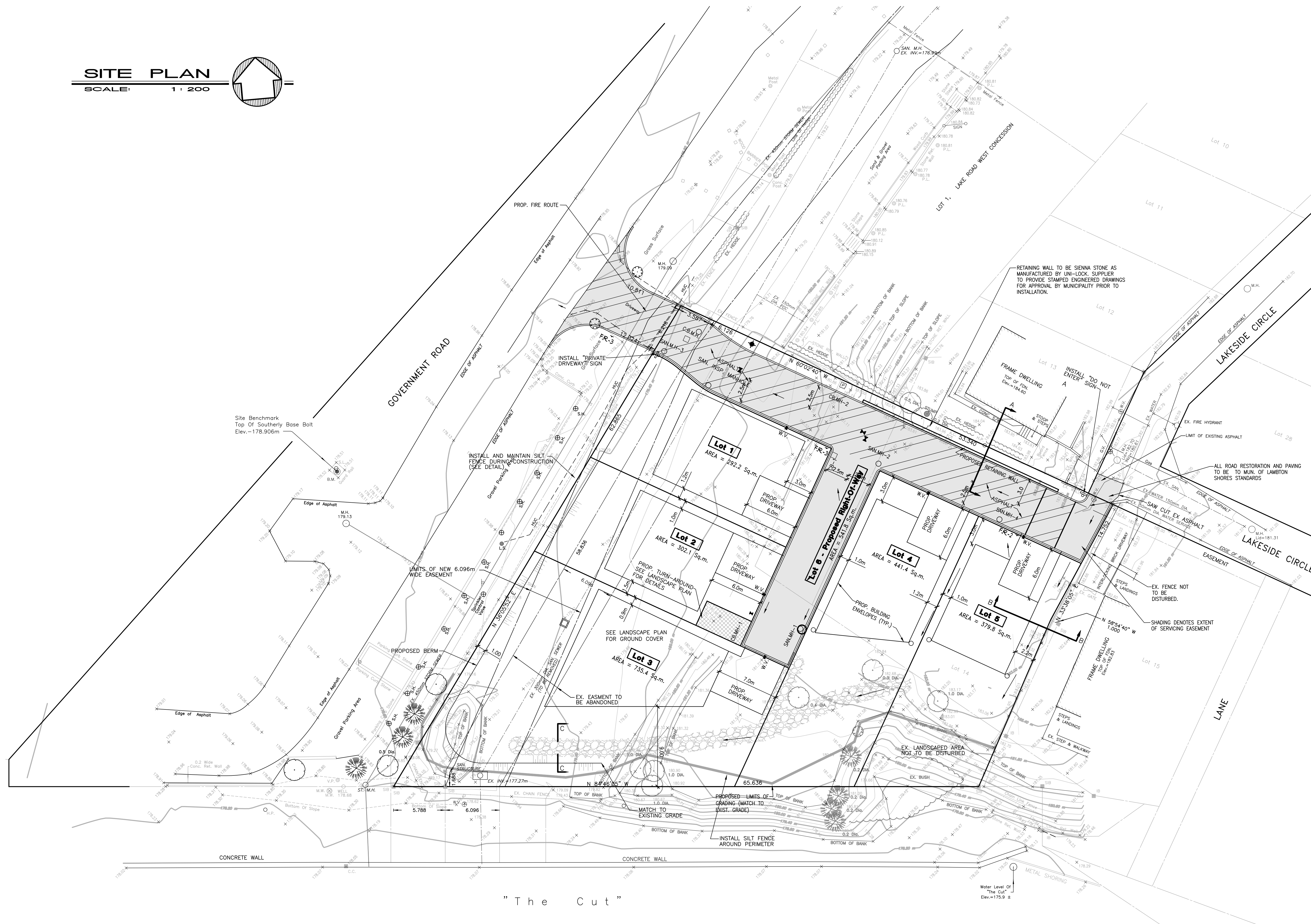
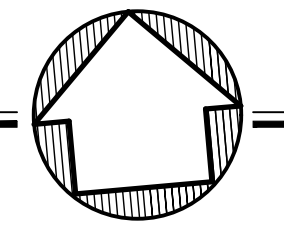


SITE PLAN
SCALE: 1:200

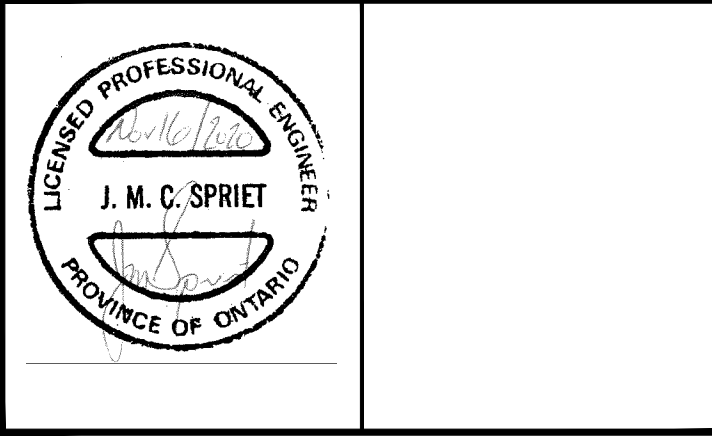


"The Cut"

revisions	date	no.
UPDATED TO CURRENT STANDARDS	NOV. 16/20	△
FURTHER REVISIONS	JUNE. 9/10	△
NEW LOTS LAYOUT	MAY. 5/10	△
ADDITIONAL REVISIONS	OCT. 2/08	△
ADDITIONAL REVISIONS	SEPT. 22/08	△
SANITARY SEWER REVISIONS	AUG. 25/08	△
REVISIONS	JULY 11/08	△
REVISIONS	JUNE 19/08	△

CONTRACTORS MUST CHECK AND VERIFY ALL DIMENSIONS AND REPORT ANY DISCREPANCY TO THIS FIRM BEFORE PROCEEDING WITH THE WORK

A - detail no.
B - location sheet
C - detail sheet



SPRIET ASSOCIATES

LIMITED architects LONDON LTD. engineers

155 YORK STREET - LONDON - N6A 1A8
phone : (519) 672-4100 fax : (519) 433-9351
e-mail : mail@spriet.on.ca

VIEW WEST GRAND BEND, ONTARIO

24 GOVERNMENT ROAD
ART BLUMAS

drawing title :	
SITE PLAN	
date : JUNE 13, 2008	drawing no. :
scale : AS NOTED	
drawn by : AH	
project no. : 22021	SP1