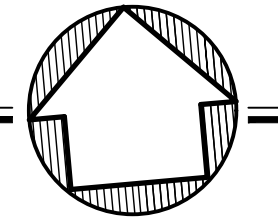


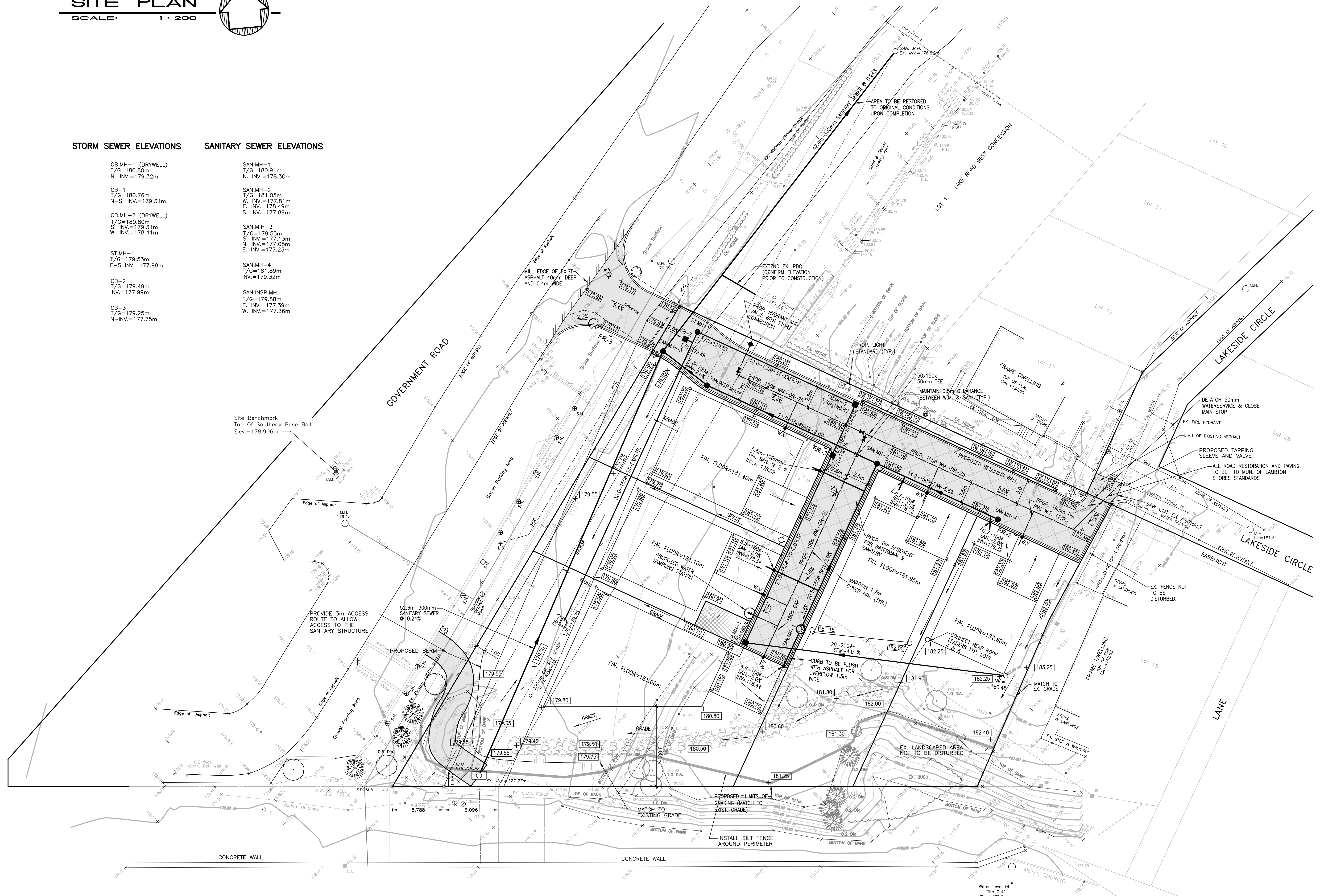
SITE PLAN
SCALE: 1:200



STORM SEWER ELEVATIONS **SANITARY SEWER ELEVATIONS**

- | | |
|---|--|
| <p>CB.MH-1 (DRYWELL)
T/G=180.80m
N. INV.=179.32m</p> <p>CB-1
T/G=180.76m
N-S. INV.=179.31m</p> <p>CB.MH-2 (DRYWELL)
T/G=180.80m
S. INV.=179.31m
W. INV.=178.41m</p> <p>ST.MH-1
T/G=179.53m
E-S INV.=177.99m</p> <p>CB-2
T/G=179.49m
INV.=177.99m</p> <p>CB-3
T/G=179.25m
N-INV.=177.75m</p> | <p>SAN.MH-1
T/G=180.91m
N. INV.=178.30m</p> <p>SAN.MH-2
T/G=181.05m
W. INV.=177.81m
E. INV.=178.49m
S. INV.=177.89m</p> <p>SAN.MH-3
T/G=179.55m
S. INV.=177.13m
N. INV.=177.08m
E. INV.=177.23m</p> <p>SAN.MH-4
T/G=181.89m
INV.=179.32m</p> <p>SAN.INSP.MH.
T/G=179.88m
E. INV.=177.39m
W. INV.=177.36m</p> |
|---|--|

Site Benchmark
Top Of Southerly Base Bolt
Elev.=178.906m

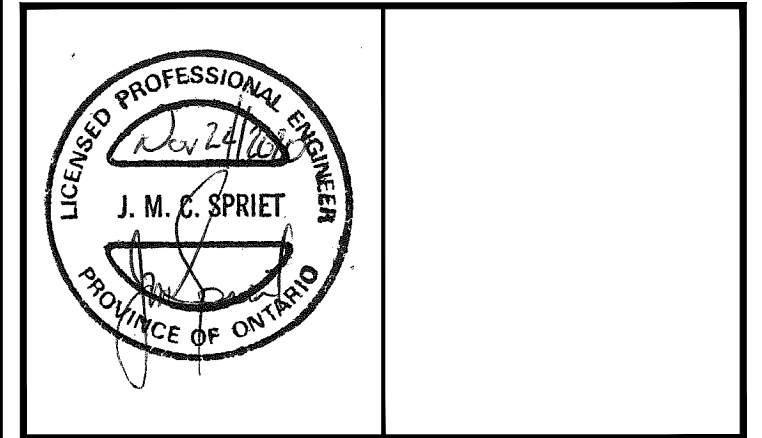


"The Cut"

revisions	date	no.
LANE ADDED	NOV. 24/20	△
UPDATED TO CURRENT STANDARDS	NOV. 16/20	△
FURTHER REVISIONS	JUNE. 9/10	△
NEW LOTS LAYOUT	MAY. 5/10	△
ADDITIONAL REVISIONS	OCT. 2/08	△
ADDITIONAL REVISIONS	SEPT. 22/08	△
SANITARY SEWER REVISIONS	AUG. 25/08	△
REVISIONS	JULY 11/08	△
REVISIONS	JUNE 19/08	△

CONTRACTORS MUST CHECK AND VERIFY ALL DIMENSIONS AND REPORT ANY DISCREPANCY TO THIS FIRM BEFORE PROCEEDING WITH THE WORK

A - detail no.
B - location sheet
C - detail sheet



SPRIET ASSOCIATES

LIMITED
architects
LONDON LTD.
engineers

155 york street - london - N6A 1A8
phone: (519) 672-4100 fax: (519) 433-9351
e-mail: mail@spriet.on.ca

VIEW WEST
GRAND BEND, ONTARIO
24 GOVERNMENT ROAD
ART BLUMAS

drawing title:	
SITE SERVICES	
date: JUNE 13, 2008	drawing no.:
scale: AS NOTED	
drawn by: AH	SP2
project no.: 220211	